

TOWER CRANE

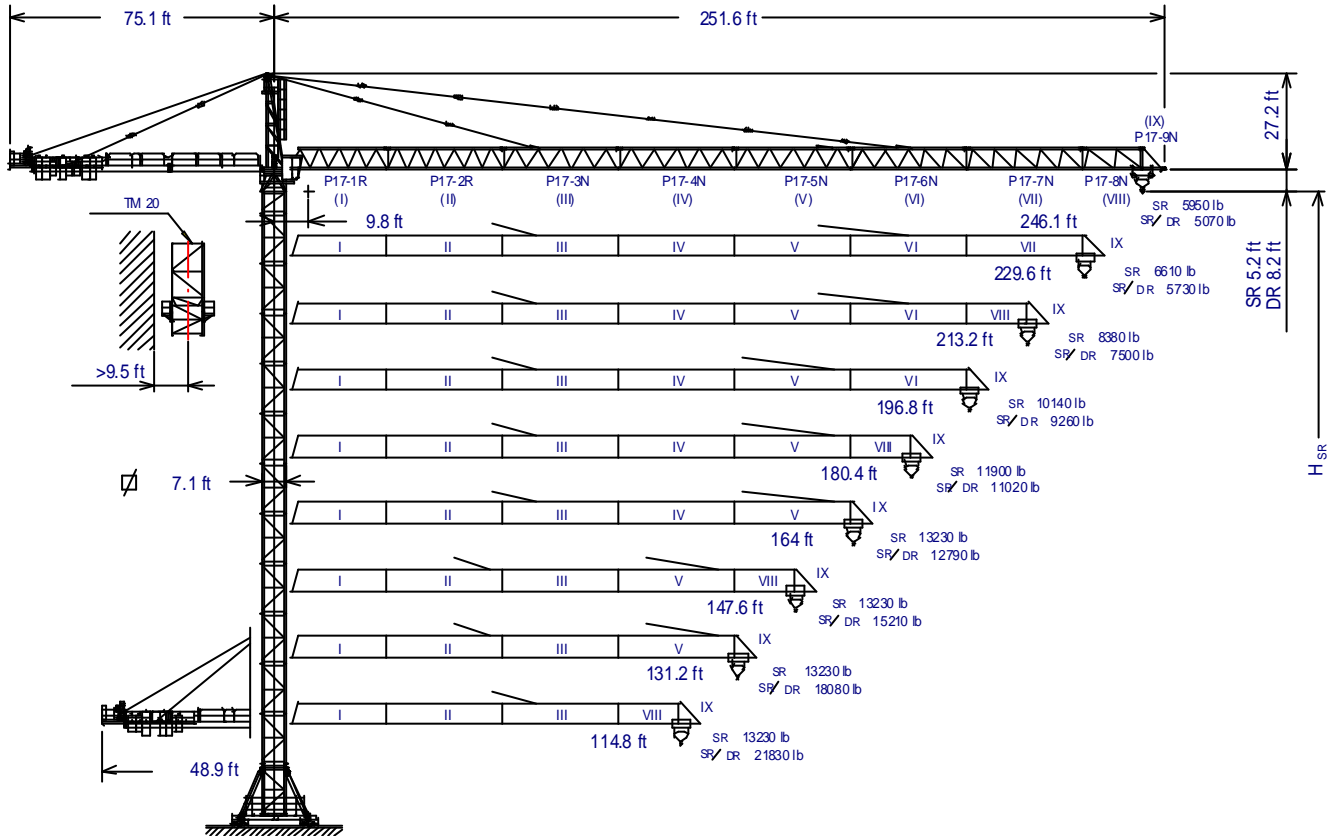
J3001

According to

UNE 58-101-92
FEM 1001-87
Sound power level directives
84/534/CEE & 87/405/CEE
Machinery directives
89/392/CEE & 91/368/CEE

ENGLISH TOP LINE SERIES

QUALITY ASSURANCE SYSTEM CERTIFIED ACCORDING TO
UNE-EN-ISO 9001

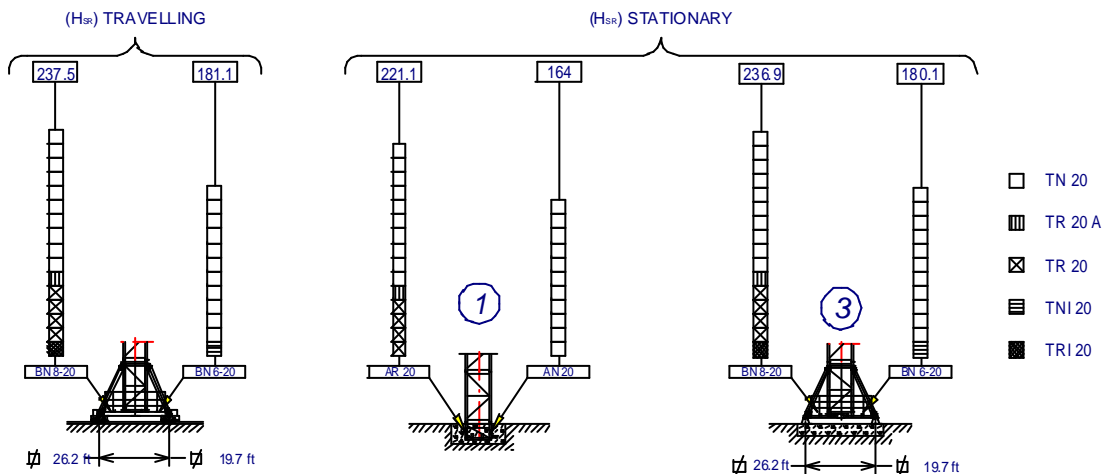


$$H_{DR} = H_{SR} - 0.9$$

H_{SR} = Maximum height under hook without fastening (ft)

TNI 20	200.30.500
TRI 20	153.30.000
TM 20	142.35.000

BN 6-20	200.20.000
BN 8-20	153.20.000
AR 20	136.21.500
AN 20	136.21.000




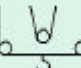
JASO EQUIPOS DE OBRAS, S.A.

Date: 04-07-01 - Subject to modification, without previous warning




LOADS

J 3001

		Maximum loads SR - 13230								13230 lb at ... (ft)	
JIB	SR (lb)	Hook reach (ft)									
		246.1	229.6	213.2	196.8	180.4	164	147.6	131.2	114.8	
246.1 ft	5950	6490	7110	7830	8670	9700	11000	12510	13230	13230	124.9
229.6 ft	-----	6610	7240	7970	8840	9880	11140	12730	13230	13230	126.8
213.2 ft	-----	-----	8380	9200	10180	11350	12790	13230	13230	13230	143.2
196.8 ft	-----	-----	-----	10140	11200	12480	13230	13230	13230	13230	155.7
180.4 ft	-----	-----	-----	-----	11900	13230	13230	13230	13230	13230	164.3
164 ft	-----	-----	-----	-----	-----	13230	13230	13230	13230	13230	164
147.6 ft	-----	-----	-----	-----	-----	-----	13230	13230	13230	13230	147.6
131.2 ft	-----	-----	-----	-----	-----	-----	-----	13230	13230	13230	131.2
114.8 ft	-----	-----	-----	-----	-----	-----	-----	-----	13230	13230	114.8

		Maximum loads SR/DR - 13230/26460										13230 26460 lb at ... (ft)		
JIB	SR / DR (lb)	Hook reach (ft)												
		246.1	229.6	213.2	196.8	180.4	164	147.6	131.2	114.8	98.4	82	65.6	
246.1 ft	5070	5620	6260	7000	7880	8930	10220	11830	13230	13230	13230	13230	13230	119.6
									13890	16640	20500	26290	26290	65.2
229.6 ft	---	5730	6370	7130	8010	9080	10380	12010	13230	13230	13230	13230	13230	121.2
									14110	16900	20810	26460	26460	66.1
213.2 ft	---	---	7500	8340	9340	10540	12000	13230	13230	13230	13230	13230	13230	136.2
									13830	16190	19320	23720	26460	74.3
196.8 ft	---	---	---	9260	10340	11640	13230	13230	13230	13230	13230	13230	13230	147.6
									15210	17760	21160	25930	26460	80.5
180.4 ft	---	---	---	---	11020	12390	13230	13230	13230	13230	13230	13230	13230	155.3
									14060	16150	18840	22410	26460	84.7
164 ft	---	---	---	---	---	12790	13230	13230	13230	13230	13230	13230	13230	159.5
									14510	16640	19400	23070	26460	87
147.6 ft	---	---	---	---	---	---	13230	13230	13230	13230	13230	13230	13230	147.6
									15210	17450	20320	24140	26460	90.6
131.2 ft	---	---	---	---	---	---	---	13230	13230	13230	13230	13230	13230	131.2
									18080	21040	24990	26460	26460	93.4
114.8 ft	---	---	---	---	---	---	---	---	13230	13230	13230	13230	13230	114.8
									21830	25900	26460	26460	26460	96.5

MECHANISMS FEATURES

MECHANISMS	*optional					
		EJ100120VF	TGJ3020VF	OR2207VF	TCM7105VF	TH2006
hp		98.6	5.4 x 7.4	4 x 7.4	7.4	20.1
SPEEDS	SR 4190 lb 6830 lb 13230 lb DR 8380 lb 13670 lb 26460 lb	0...23/23...98/98...197/197...195/295...394ft/min 0...23/23...98/98...197/197...295 ft/min 0...23/23...98/98...197 ft/min 0...11/11...49/49...98/98...148/148...197 ft/min 0...11/11...49/49...98/98...148 ft/min 0...11/11...49/49...98 ft/min	0...66 ft/min	0...0.2 0.2...0.35 0.35...0.7 sl/min	13230 lb 0...344 ft/min 26460 lb 0...171 ft/min	2 ft/min
Maximum hook course	SR	610 ft 1056 ft	3 layers 5 max. layers		380/415V 50Hz	Power required with ... EJ 100120 VF = 157.6 hp
	DR	305 ft 528 ft	3 layers 5 max. layers			440V 60Hz

IMPORTANT: When the height under hook increases, the hoisting load will decrease. Consult the B01 document of the hoisting mechanism of the Manufacturer's Handbook.



JASO EQUIPOS DE OBRAS, S.A.

Date: 04-07-01 - Subject to modification, without previous warning

PACKING LIST

J 3001

DENOMINATION		L (ft)	A (ft)	H (ft)	P / W (lb)	
Lower tower	TN 20 – TR20	14.7-15	7.2-7.1	7.4	5963-7826	
	TNI 20 – TRI 20	14.7	8.3	8.3	7297-8907	
	TR 20A	14.7	7.1	7.4	7727	
Slewing table, tower head base and slewing mechanism			16.7	7.8	8.3	16292
Tower head			26.9	4.6	6	6217
Slewing table assembly, tower head and slewing mechanism			39.9	10	8.1	23700
Jib section	P17-1R (I)		28.6	5.5	6.5	3858
	P17-2R (II)		33.4	5.2	6.7	4482
	P17-3N (III)		33.4	5.2	6.7	4564
	P17-4N (IV)		33.4	5.2	6.2	3744
	P17-5N (V)		33.4	5.2	6.5	3390
	P17-6N (VI)		33.4	5.2	6.5	3318
	P17-7N (VII)		33.4	5.2	6.2	2756
	P17-8N (VIII)		17.4	5.2	6.2	1647
	P17-9N (IX)		7.1	5.2	7.2	794
Hook assembly	SR		3.5	1	3.1	650
	DR		3.9	1.2	6.5	1280
Jib support tie	Long		16.3	1.3	2.4	3538
	Short		19.7	0.7	2.3	1918
Crab	SR		5.78	7.6	9.9	882
	DR		6.3	7.7	9.9	1280
Counterjib with platforms			39.7	9.1	2	6800
Counterjib extension with platform			27.2	6.3	1.9	4244
Platform and cabin			12.1	5.3	7.4	1808
Support and hoisting		EJ 100120 VF 	8.2	8.3	6.9	7385
Jacking cage			26.7	9.1	9.1	7915
Ballast	Stationary III / Travelling		12.5	1.9	4.9	13230
Counterweight	Big		4.9	2	7	9040
	Small		4.9	2	4.5	5640

COUNTERWEIGHTS

JIB	246.1	229.6	213.2	196.8	180.4	164	147.6	131.2	*114.8
SR SR / DR									
Total (lb)	62120	53080	53080	44040	41800	36160	27120 29360	20320 29360	38400 53080

*Short counterjib for 114.8 ft reach

BALLASTS

		For intermediate heights take the ballast corresponding to the higher height		
BN 8-20	Height under hook (ft)	237.5	194.9	152.2
BN 6-20	Height under hook (ft)	181.1	138.4	95.8
Number of ballast blocks to put	Blocks of 13230 lb	12	10	8



JASO EQUIPOS DE OBRAS, S.A.

Date: 04-07-01 - Subject to modification, without previous warning

TOWERS	HEIGHT (ft)	Diagram				HEIGHT (ft)	TOWERS
1	22.3	TN 20	TN 20	TN 20	136.31.000	22.3	1
2	36.4	TND 20	TND 20	TND 20	136.31.500	36.4	2
3	50.5					50.5	3
4	64.6					64.6	4
5	78.7					78.7	5
6	93.2					93.2	6
7	107.3					107.3	7
8	121.4					121.4	8
9	135.5					135.5	9
10	149.9			TR 20A TRD 20A	136.30.400 136.30.800	150.3	10
11	164			TR 20 TRD 20	136.30.000 136.30.500	164.4	11
12	178.8	AN 20 AND 20 ANDC 20		TR 20 TRD 20		178.8	12
13	192.9					192.9	13
14	207			TR 23/R 20	142.36.500	196.2	
				TR 23 TRD 23	142.30.000 142.30.500	210.6	14
15	221.1					224.7	15
				AR 20 ARD 20 ARDC 20		238.8	16
				AR 23 ARD 23 ARDC 23			

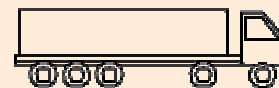
- AN 20 1 36 21 000
- AND 20 1 36 21 800
- ANDC 20 1 36 21 700
- AR 20 1 36 21 500
- ARD 20 1 36 21 900
- ARDC 20 1 36 21 600
- AR 23 1 42 21 500
- ARD 23 1 42 21 900
- ARDC 23 1 42 21 600

The represented tower configurations are assembly recommendations that can be used in any installation. Each tower section in its indicated position can also be used as the lower element of the mast tower in standard freestanding crane with its corresponding height under hook.

Tower configurations not shown here, with greater heights under hook or with different tower sections, are also possible but must be checked and confirmed in writing by our technical department in every individual case and before crane installation starts.

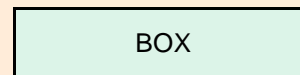
Free standing crane transport with travelling base of 19.7x19.7ft without base ballast

In trucks



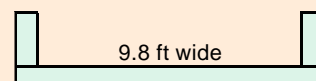
8 units
9 units

In containers

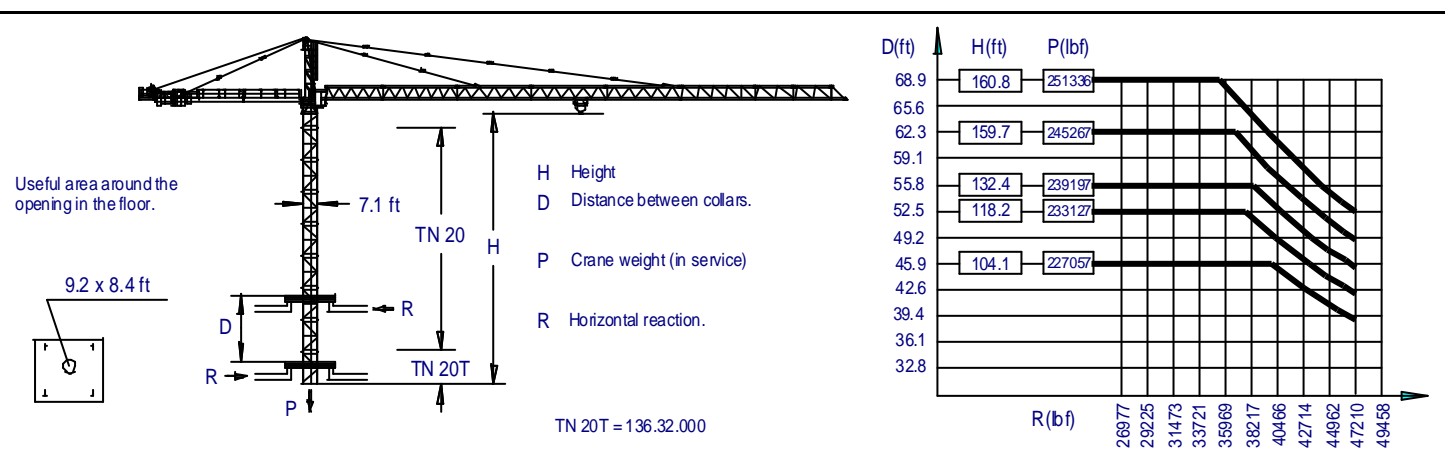


9 units
10 units

FLAT RACK



9.8 ft wide
1 unit



JASO EQUIPOS DE OBRAS, S.A.

Ctra./Rd. Madrid - Irún Km. 415
20.213 IDIAZABAL (Gipuzkoa)
ESPAÑA / SPAIN
P.O. Box, 23 - 20.200 BEASAIN

Tel. +34 943 - 18 70 00
Fax. +34 943 - 18 70 20
E-mail: jaso@jaso.com
http://www.jaso.com

Date: 04-07-01

Subject to modification, without previous warning

DELEGATION