

# PECCO

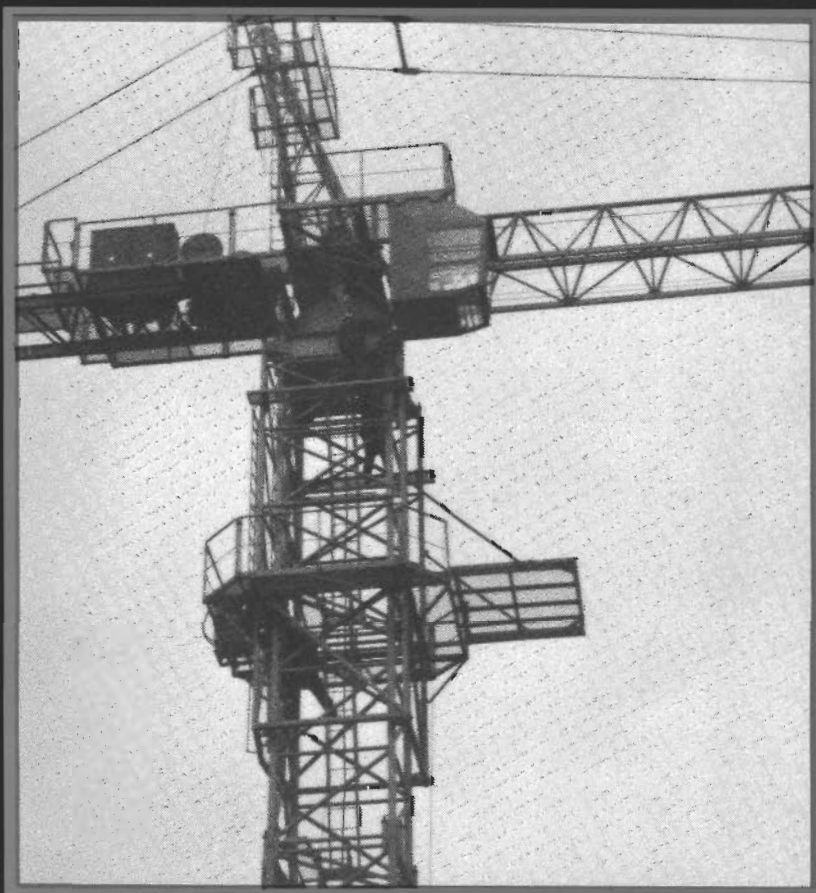
## specifications

### Top-Climbing Tower Crane

### Model SK160

Maximum Reach,  
168 feet

Maximum Lift Capacity,  
28,000 pounds



# PECCO

# Specifications

## Loads and Speeds

105 HP AC drive unit  
with 4 speed remote controlled gear box.

Gear	2-Part Trolley		4-Part Trolley	
	Maximum Load	Maximum Speed	Maximum Load	Maximum Speed
1	14,000 lbs	100 fpm	28,000 lbs	50 fpm
2	14,000 lbs	200 fpm	28,000 lbs	100 fpm
3	9,500 lbs	300 fpm	19,000 lbs	150 fpm
4	5,500 lbs	500 fpm	11,000 lbs	250 fpm

177 HP Ward-Leonard drive unit  
with 2 speed remote controlled gear box.

Gear	2-Part Trolley		4-Part Trolley	
	Maximum Load	Maximum Speed	Maximum Load	Maximum Speed
1	14,000 lbs	250 fpm	28,000 lbs	125 fpm
2	5,000 lbs	710 fpm	10,000 lbs	355 fpm

## Non-Hoisting Functions

Movement	Speed	Power	Special Notes
Slewing	1 rpm	Two 6.5Hp Motors	Ball-bearing race
Trolley Travel	125 fpm 250 fpm	One 6.5Hp Motor	Variable from 12.5 to 250 fpm with 2 speed remote controlled gear box—motor equipped with eddy current brake.
Crane Travel for travelling configurations	100 fpm	Two 16Hp Motors	Minimum radius of rail is 30 ft

Power required for all motors is 440-volt, 60-Hertz, 3-phase.

Note: American Pecco reserves the right to change specifications without notice.

# Capacities

Jib Model	2 Part Trolley			4 Part Trolley		
	L1	L2	L3	L1	L2	L3
Maximum Hook Reach	101'	134'6"	168'	101'	134'6"	168'
Distance Hook from Tower	Permissible Load (Pounds)					
9'2"	14,000	14,000	14,000	28,000	28,000	28,000
46'7"	↓	↓	↓	↓	↓	28,000
47'7"				↓	28,000	27,000
48'7"				28,000	27,000	26,300
54'5"				24,100	23,600	23,000
65'7"				19,400	18,900	18,400
76'9"				16,100	15,600	15,200
87'7"			↓	13,800	13,500	13,300
89'7"		14,000	13,500	13,400	13,200	12,900
91'6"	14,000	13,500	13,200	13,000	12,800	12,600
101'	12,400	12,200	11,800	11,500	11,300	11,100
110'3"		10,900	10,600		10,000	9,700
121'5"		9,700	9,500		8,800	8,600
134'6"		8,600	8,400		7,700	7,600
143'9"			7,800			6,900
154'10"			7,100			6,200
166'			6,500			5,600
168'			6,400			5,500

# Weights

Jib Model	Counterjib Ballast		
	L1	L2	L3
	26,400 lbs.	30,800 lbs.	37,400 lbs.

Tower Configuration	A1	A2	B
Weight, without ballast with jib L3	113,760 lbs	121,700	99,870*

\*Including climbing frames and support beams

SOIL BEAMS:

1 TON

1 1/2 TON

2 TON

PAJ SIZE

23x23x 2'-10"

22x22x 3'-0"

21x21x 3'-6"

# Parts

				Length Ft&In	Width Ft&In	Height Ft&In	Weight Ea.-Lbs	Weight Tot.-Lbs	Used For Configuration:
1	1	Undercarriage with Control Panel and Travel Motors		31'-3"	8'-7"	7'-2"	21,100		E
2	1	Cable Drum		4'-6"	4'-9"	2'-8"	620		E
3	2	Knee Braces (2) Pieces		12'-4"	7"	1'-0"	1,300		A2, E
4	max.18	Central Ballast		13'-2"	1'-8"	6'-9"	11,020	198,420	E
5	2	Central Ballast		6'-3"	1'-8"	5'-5"	5,510	11,020	E
6	1	Tower Section with (2) Knee Braces		22'-9"	8'-7"	8'-7"	9,550		A2, E
7	11	Tower Section-Standard		14'-11"	7'-1"	7'-1"	4,670	51,410	A1, A2, B, E, D
8	1	Climbing Unit with Climbing Mechanism		23'-6"	9'-8"	8'-7"	11,350		A1, A2, E, D
9	1	Turntable with Ball Bearing Slewing Ring and Support		9'-10"	8'-6"	9'-5"	15,390		A1, A2, B, E, D
10		Turntable Platform					1,370		A1, A2, B, E, D
11	1	Jib Section 1 with Trolley Winch		51'-0"	6'-3"	7'-8"	4,830		A1, A2, B, E, D
12	1	Jib Section 2		51'-2"	5'-7"	7'-4"	4,250		A1, A2, B, E, D
13	1	Jib Section 3		34'-6"	5'-7"	6'-8"	2,380		A1, A2, B, E, D
14	1	Jib Section 4 with Jib Tip		36'-3"	6'-3"	7'-5"	1,940		A1, A2, B, E, D
15	1	Counter Jib with Catwalk and Platform		46'-3"	5'-10"	7'-2"	8,400		A1, A2, B, E, D
16	max. 4	Counter Jib Counterweight		8'-1"	1'-2"	7'-0"	7,720	30,860	A1, A2, B, E, D
17	max. 2	Counter Jib Counterweight		4'-7"	1'-2"	4'-8"	3,310	6,610	A1, A2, B, E, D
18									
19	1	Hoist Winch with Frame		8'-4"	5'-1"	3'-6"	4,740		A1, A2, B, E, D
20	1	Erection Frame for Counterweights		8'-5"	2'-8"	4'-3"	440		A1, A2, B, E, D
21	1	Tower Top With Climbing Frame		27'-4"	6'-7"	8'-5"	5,290		A1, A2, B, E, D
22		Climbing Frame							B
23	1	Operators Cabin Crated		6'-1"	4'-0"	6'-11"	770		A1, A2, B, E, D
24	1 1	Trolley 2 part 4 part		6'-7" 7'-4"	3'-2" 6'-5"	6'-3" 3'-3"	680 1,100		A1, A2, B, E, D
25	1 1	Load Hook 2 part 4 part		1'-1" 11"	2'-2" 1'-9"	3'-8" 4'-6"	440 770		A1, A2, B, E, D
26		Electrical & Mechanical Equipment Crated		5'-8"	3'-4"	2'-9"	2,200		A1, A2, B, E, D
27	1	Foundation Plate		8'-2"	8'-2"	6"	750		A1, D
28	4	Foundation Anchorage		1'-8"	1'-0"	2'-5"	260	1,060	A1, D
29	4	Foundation Frame, (2) Pieces		14'-3"	1'-6"	2'-0"	1,980	3,970	A2



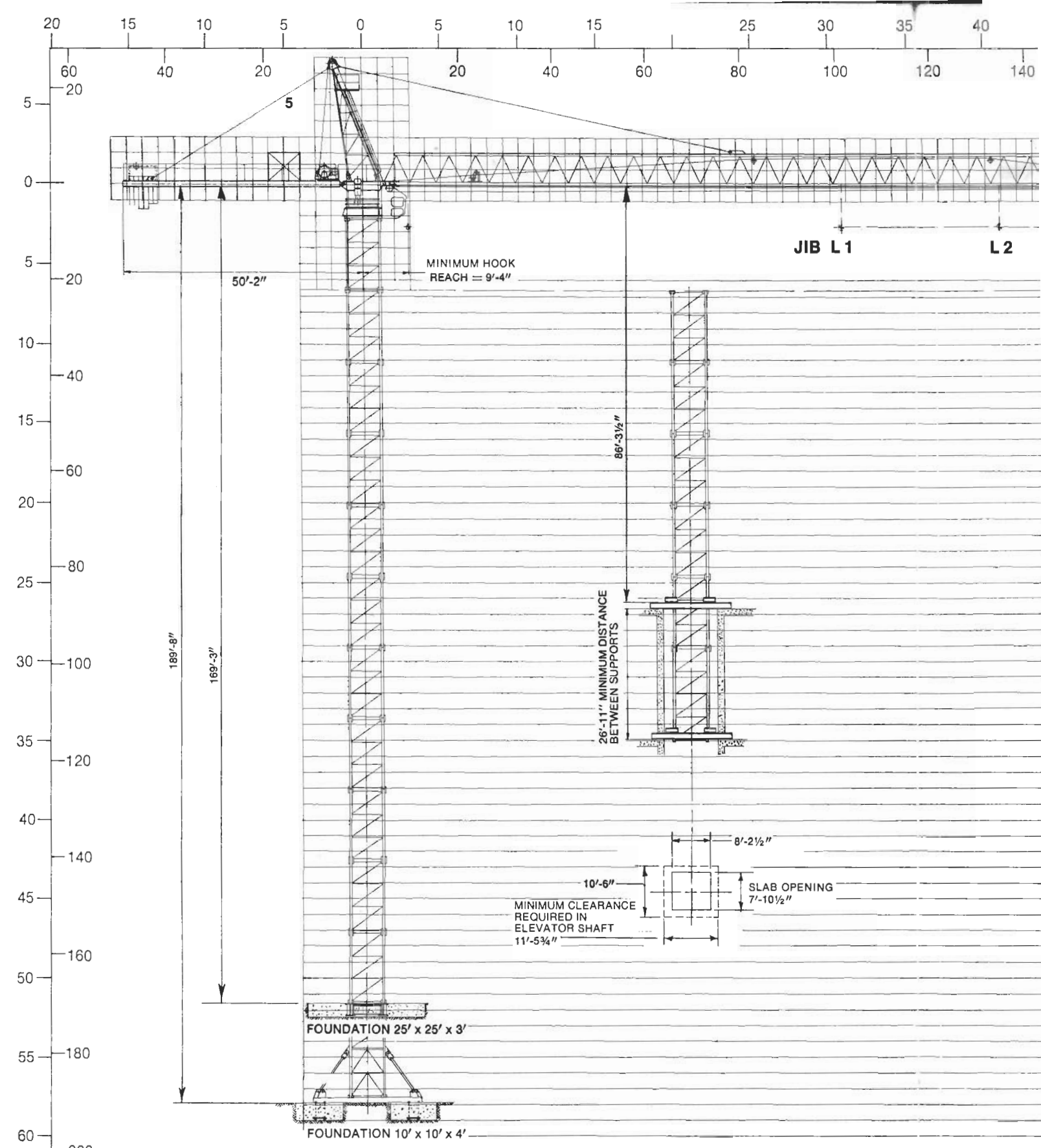
**American Pecco Corporation**

Millwood, New York 10546 · (914) 762-0550

Offices in:

WASHINGTON, D.C. (703) 361-6136 • TAMPA, FLA. (813) 621-3508 • HOUSTON, TEX. (713) 733-9461 • LOS ANGELES, CALIF. (213) 723-8964 • SAN FRANCISCO, CALIF. (415) 785-8055 • CHICAGO, ILL. (312) 362-5640 • TORONTO, CANADA (416) 749-3404

PRINTED IN U.S.A.

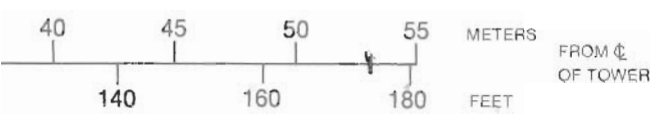


**CONFIGURATIONS A1 A2**

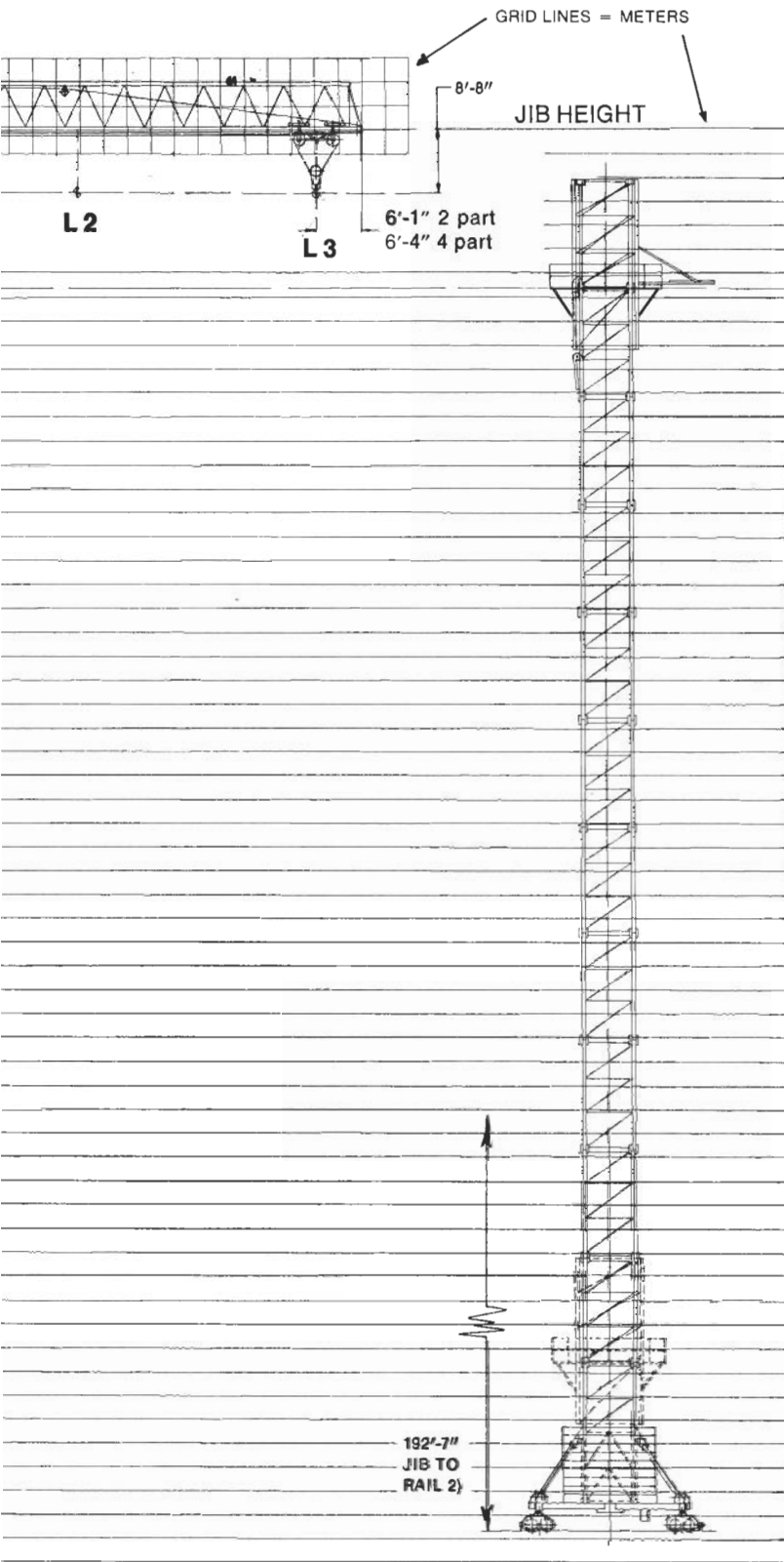
**CONFIGURATION B**

EXPLANATION OF CONFIGURATIONS	
A	= STATIONARY AND FREE-STANDING
B	= SUPPORTED IN BUILDING
D	= STATIONARY AND ANCHORED TO BUILDING
E	= TRAVELING ON UNDERCARRIAGE
1	= WITHOUT KNEEBRACES
2	= WITH KNEEBRACES

- 1) MAXIMUM JIB HEIGHT ABOVE UPPER SUPPORT
- 2) OTHER JIB HEIGHTS ARE POSSIBLE USING TOWER SECTIONS FROM OTHER CRANES.
- 3) USING 2-PART HOIST LINE. "( )" INDICATES 4-PART HOIST LINE.



# SK 160 Configurations PECCO Tower Crane

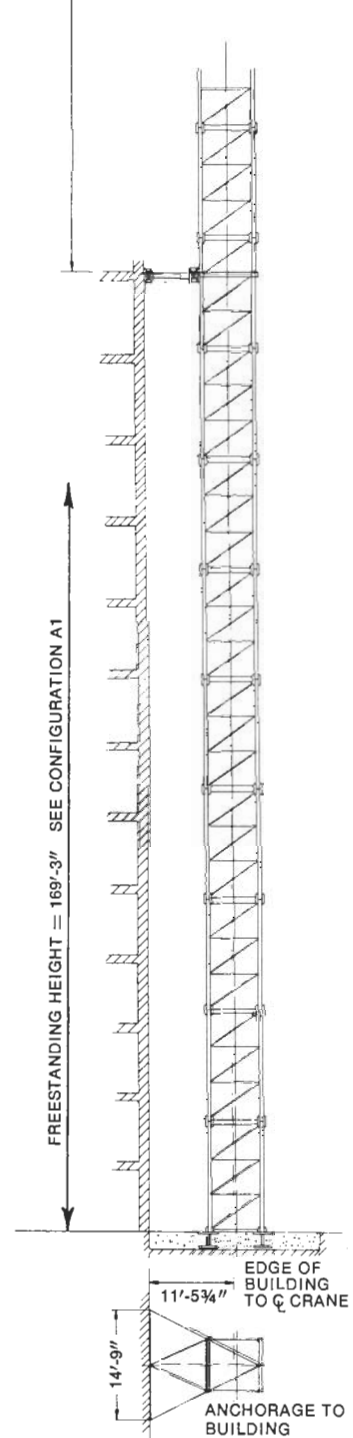


MAXIMUM JIB HEIGHT ABOVE LAST ANCHORAGE IS 129'-11" WHEN JIB IS GREATER THAN 330' HIGH.

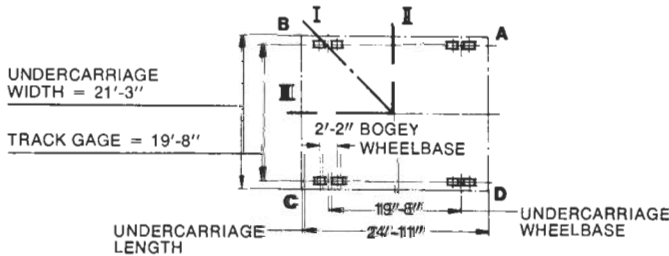
MAXIMUM JIB HEIGHT ABOVE LAST ANCHORAGE IS 144'-8" WHEN JIB IS LESS THAN 330' HIGH.

FIRST ANCHORAGE IS 128' ABOVE FOUNDATION.

SECOND AND SUBSEQUENT ANCHORAGES ARE 44'-3 1/2" APART.



## CONFIGURATION E



PLAN VIEW OF UNDERCARRIAGE

## CONFIGURATION D