

PECCO

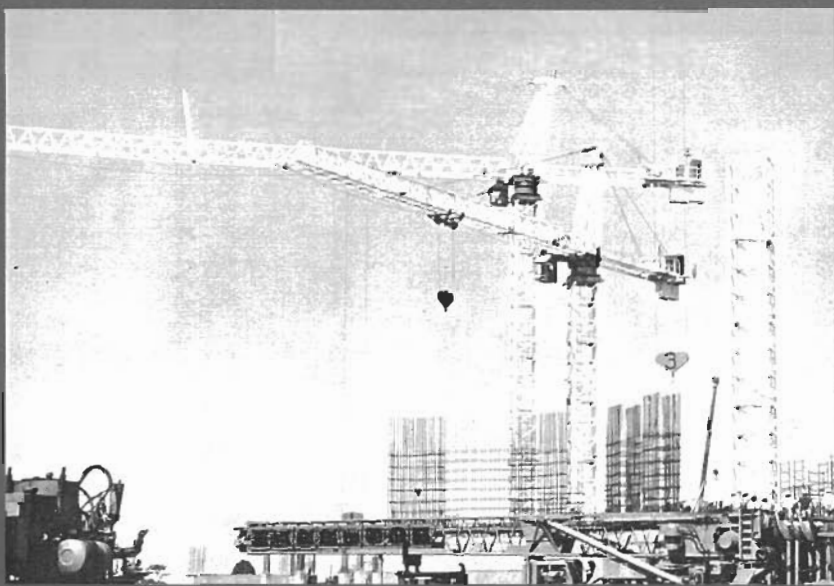
specifications

Tower Crane

Model SK170

Maximum Reach,
191'-0"

Maximum Lift Capacity,
22,000 pounds



PECCO

Specifications

Loads and Speeds

105 HP AC drive unit
with 4 speed remote controlled gear box.*

Gear	2-Part Trolley		4-Part Trolley	
	Maximum Load	Maximum Speed	Maximum Load	Maximum Speed
1	22,000 lbs.	100 fpm	27,500 lbs	50 fpm
2	15,000 lbs	200 fpm	27,500 lbs	100 fpm
3	9,500 lbs	300 fpm	19,000 lbs	150 fpm
4	5,500 lbs	500 fpm	11,000 lbs	250 fpm

177 HP Ward-Leonard drive unit
with 2 speed remote controlled gear box.*

Gear	2-Part Trolley		4-Part Trolley	
	Maximum Load	Maximum Speed	Maximum Load	Maximum Speed
1	N 22,000 lbs	140 fpm	27,500 lbs	70 fpm
	F 14,000 lbs	250 fpm	27,500 lbs	125 fpm
2	N 9,900 lbs	360 fpm	19,800 lbs	180 fpm
	F 5,000 lbs	710 fpm	10,000 lbs	355 fpm

N = normal operation; F = field weakening operation

*Certain crane models are equipped with different drives, always check appropriate capacity and speed.

Non-Hoisting Functions

Movement	Speed	Power	Special Notes
Slewing	1 rpm	Two 6.5hp Motors	Ball-bearing race
Trolley Travel	160 or 250 fpm	One 18.0hp Motor	Variable from 16 to 250 fpm with 2 speed remote controlled gear box — motor equipped with eddy current brake.
Crane Travel for travelling configurations	100 fpm	Two 16Hp Motors	Minimum radius of rail is 30 ft

Power required for all motors is 440-volt, 60-Hertz, 3-phase.

Note: American Pecco reserves the right to change specifications without notice.

Lifting capacities

SK 170

Lifting capacities in accordance with F.E.M. standards

Jib Model	L1	L2	L3	L4	L5	Hook Reach
Max. Hook Reach	91' - 3"	117' - 5"	149' - 0"	170' - 0"	191' - 0"	
Lifting Capacities in pounds, two part line	22,000	22,000	22,000	22,000	22,000	11' - 2"
	22,000	22,000	22,000	22,000	22,000	51' - 10"
	22,000	22,000	22,000	22,000	21,000	54' - 0"
	22,000	22,000	22,000	22,000	20,200	56' - 0"
	22,000	22,000	22,000	22,000	19,300	58' - 0"
	22,000	22,000	22,000	22,000	18,300	60' - 4"
	22,000	22,000	22,000	21,500	18,000	61' - 4"
	22,000	22,000	21,000	20,600	17,300	63' - 8"
	22,000	21,400	20,500	20,000	16,700	65' - 4"
	20,300	19,700	18,900	18,500	15,500	70' - 0"
	18,800	18,300	17,400	17,000	14,300	75' - 0"
	17,500	17,000	16,200	15,800	13,200	80' - 0"
	16,300	15,700	15,000	14,700	12,300	85' - 0"
	15,100	14,800	14,000	13,700	11,500	90' - 0"
	15,000	14,500	13,700	13,400	11,200	91' - 3"
		13,800	13,100	12,800	10,800	95' - 0"
		13,000	12,400	12,000	10,100	100' - 0"
		11,500	11,000	10,700	9,000	110' - 0"
		10,800	10,000	9,800	8,200	117' - 5"
			8,900	8,700	7,200	130' - 0"
		8,200	8,000	6,500	140' - 0"	
		7,700	7,300	6,000	149' - 0"	
			6,700	5,300	160' - 0"	
			6,400	5,000	170' - 0"	
				4,600	180' - 0"	
				4,400	191' - 0"	

Weights

Counterjib – Counterweight

Jib Model	L1	L2	L3	L4	L5
	17,300 Lbs.	26,000 Lbs.	34,600 Lbs.	43,300 Lbs.	52,000 Lbs.

Parts SK 170

No.	Description	Sketch	Length Ft. & In.	Width Ft. & In.	Height Ft. & In.	Weight Each - Lbs.	Weight Total - Lbs.	Used for Configuration
1	Undercarriage with control panel and Travel Motors		31'-3"	8'-7"	7'-2"	21,100		E
2	Power Cable Drum		4'-6"	4'-9"	2'-8"	620		E
3	Knee Braces		12'-4"	7"	1'-0"	1,300		A2,E
4	18 Max. Central Ballast		13'-2"	1'-8"	6'-9"	11,020	198,420	E
5	Central Ballast		6'-3"	1'-8"	5'-5"	5,510	11,020	E
6	Tower Section with (2) Knee Braces		22'-9"	8'-7"	8'-7"	9,550		A2,E
7	11 Tower Sections - Standard		14'-11"	7'-6"	7'-6"	5,050	55,550	A1,A2, B,E,D
8	Climbing Unit with Climbing Mechanism		23'-6"	9'-8"	8'-7"	11,350		E,D
9	Turntable with Ball Bearing Slewing Ring and Support		9'-10"	8'-6"	9'-5"	15,390		A1,A2, B,E,D
10	Turntable Platform & Cab Support		10'-9"	6'-7"	5'-0"	1,470		A1,A2, B,E,D
11	2 Jack Support Beam		11'-0"	2'-3"	1'-9"	1,780	3,560	B
12	2 Hydraulic Jacks Packed in Box		4'-0"	2'-3"	2'-3"	840	1,680	B
13	2 Lifting Yoke		6'-2"	4"	3'-8"	310	620	B
14	6 Climbing Rods		20'-0"	--	--	90	540	B
15	2 Crane Support Beam		6'-0"	1'-7"	2'-2"	1,750	3,500	B
16	4 Crane Support Rods		8'-0"	--	--	45	180	B
17	1 Towntop with Jib and Counterjib Suspension Conn.		31'-2"	5'-8"	5'-9"	6,100		A1,A2, B,E,D
18	1 Operators Cabin		4'-11"	3'-11"	5'-5"	770		A1,A2, B,E,D
19	1 Jib Section A		28'-9"	5'-9"	6'-3"	3,800		A1,A2, B,E,D
20	1 Jib Section B with Trolley Unit		32'-0"	5'-9"	6'-3"	5,000		A1,A2, B,E,D
21	1 Jib Section C		32'-0"	5'-9"	6'-3"	3,900		A1,A2, B,E,D
22	1 Jib Section D		26'-9"	5'-9"	6'-3"	2,900		A1,A2, B,E,D

Item No.	Description	Sketch	Length Ft. & In.	Width Ft. & In.	Height Ft. & In.	Weight Each - Lbs.	Weight Total - Lbs.	Used for Configuration
23	1 Jib Section E		16'-3"	5'-9"	6'-3"	1,300		Omitted for Jib L1, L2
24	1 Jib Section F		16'-3"	5'-9"	6'-3"	1,350		Omitted for Jib L1, L2
25	2 Jib Section G		21'-6"	5'-9"	6'-3"	2,200		Omitted for Jib L1, L2
26	1 Jib Tip Section		5'-11"	5'-9"	6'-8"	650		A1,A2, B,E,D
27	1 Suspension Spreader		20'-0"	9"	4'-6"	550		Jib L3, L4, L5
28	2 Rope Suspension for Counterjib		43'-8"	--	--	300	600	Jib L1, L2, L3, L4, L5
29	2 Rope Suspension for Jib		90'-6"	--	--	530	1,060	Jib L1, L2, L3, L4, L5
30	1 Rope Suspension for Jib		149'-0"	--	--	850		Jib L3, L4, L5 Only
31	1 Trolley		9'-6"	6'-9"	3'-6"	1,100		A1,A2, B,E,D
32	1 Counterjib		47'-7"	9'-0"	1'-3"	5,500		A1,A2, B,E,D
33	1 Catwalk for Counterjib & Railings		--	--	--	1,800	19,000	A1,A2, B,E,D
34	1 Hoist with Frame & Drive Unit (105 H.P. Unit)		15'-6"	8'-1"	3'-5"	11,700		A1,A2, B,E,D
35	1 Counterweight		9'-10"	10"	7'-6"	8,660		A1,A2, B,E,D
36	1 Load Block		2'-5"	1'-2"	5'-7"	700		A1,A2, B,E,D
37	1 Erection Frame for Counterweight		2'-11"	9"	5'-1"	370		A1,A2, B,E,D
38	1 Accessories, Cables, Pins, Bolts, Nuts, Etc.		8'-3"	4'-11"	3'-4"	4,400		Crated
39	1 Control Panel for Hoist Unit		6'-11"	2'-1"	6'-7"	1,540		A1,A2, B,E,D
40	1 Overload Limit Switch		--	--	--	110		A1,A2, B,E,D
41	1 Electrical Accessories		3'-4"	3'-4"	3'-4"	2,420		A1,A2, B,E,D
42	1 Foundation Alignment Frame		8'-2"	8'-2"	6"	750		A1, D
43	4 Foundation Anchorage		1'-8"	1'-0"	2'-5"	1,060		A1, D
44	1 Resistor Panel		2'-7"	1'-4"	3'-0"	880		A1,A2, B,E,D



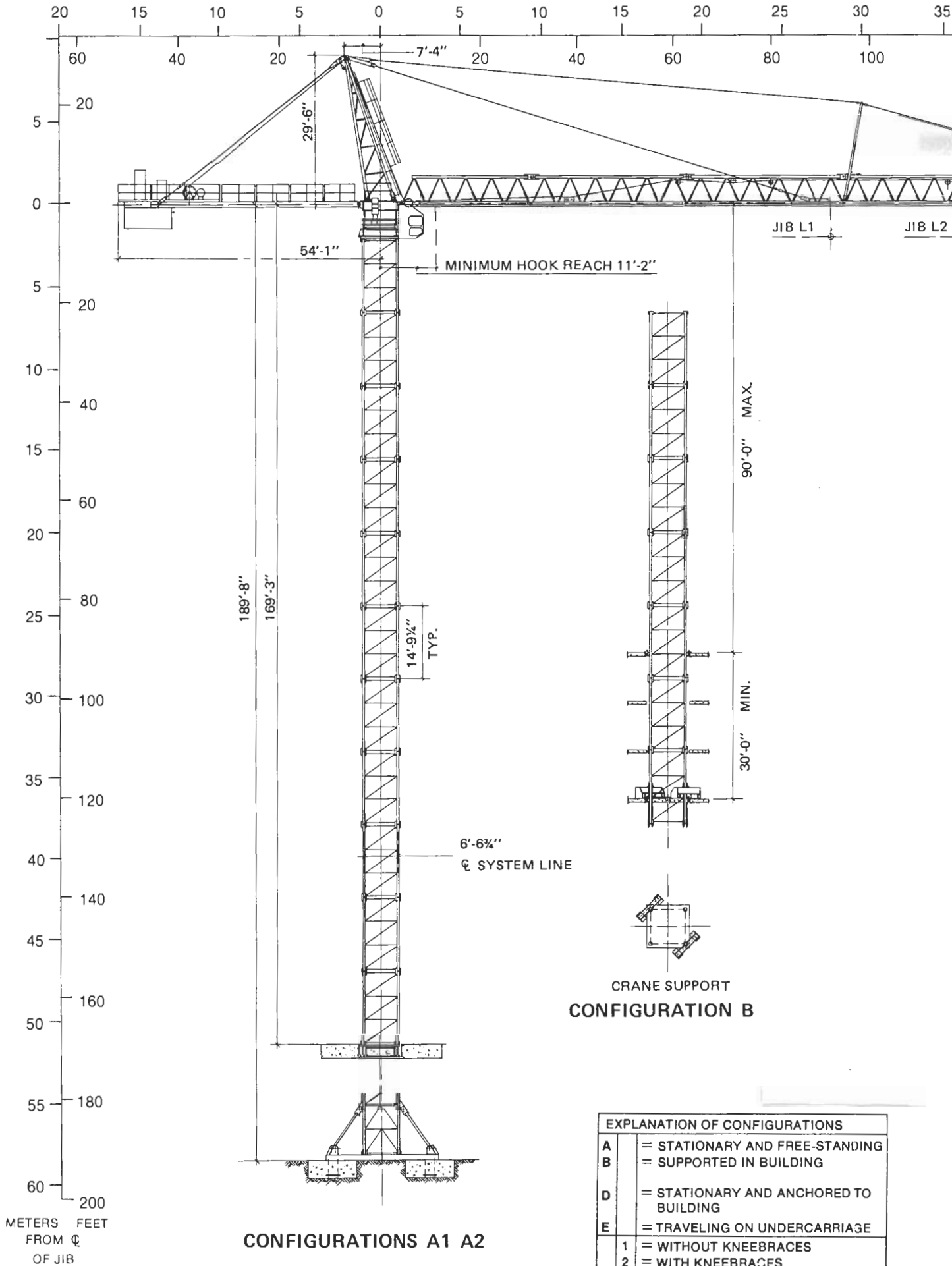
American Pecco Corporation

MILLWOOD, NEW YORK 10546 TEL 914 762-0550 • FAX 914 762-0759

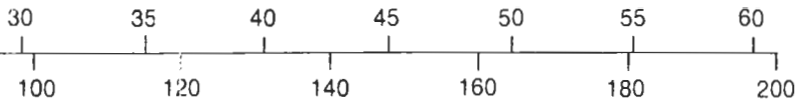
Offices in: ATLANTA, GA 404 696-6076 • LOS ANGELES, CA 213 944-6622 • CHICAGO, IL 708 546-0090

SAN FRANCISCO, CA 415 536-8055 • HOUSTON, TX 713 733-9461 • TAMPA, FL 813 621-3508 • WASHINGTON, DC 703 361-6136

**PECCO
TOWER
CRANE
SK170**



OTHER JIB HEIGHTS ARE POSSIBLE USING TOWER SECTIONS FROM OTHER CRANES.



METERS
FROM ∇
OF TOWER
FEET

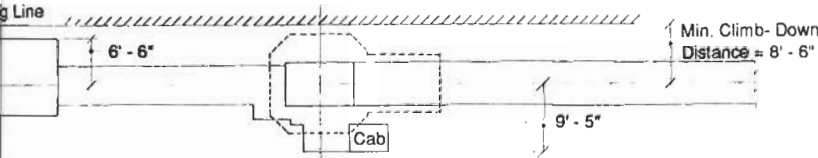
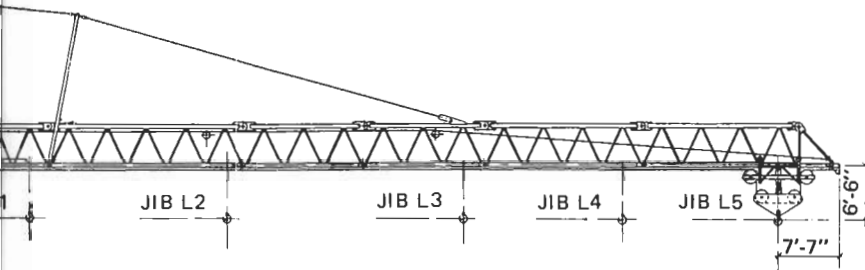
SK170 Configuration PECCO Tower Crane

MAXIMUM JIB HEIGHT ABOVE LAST ANCHORAGE IS:
129'-11" WHEN HEIGHT OF JIB IS 330' OR MORE
ABOVE TOP OF FOUNDATION.
144'-8" WHEN HEIGHT OF JIB IS LESS THAN 330'
ABOVE TOP OF FOUNDATION.

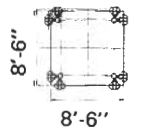
SECOND AND SUBSEQUENT ANCHORAGES ARE SPACED
88'-7" APART.

FIRST ANCHORAGE IS 128' MAXIMUM ABOVE TOP OF
FOUNDATION.

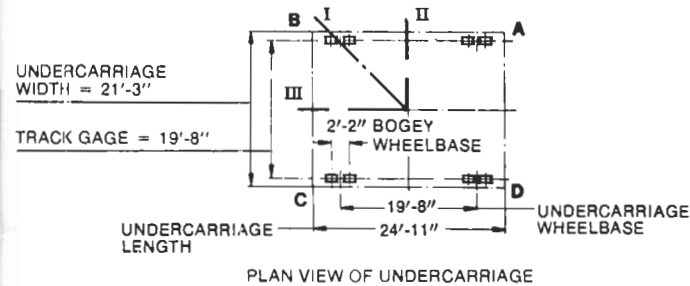
SEE CONFIGURATIONS A1, A2, E, FOR MAXIMUM FREESTAN
HEIGHTS.



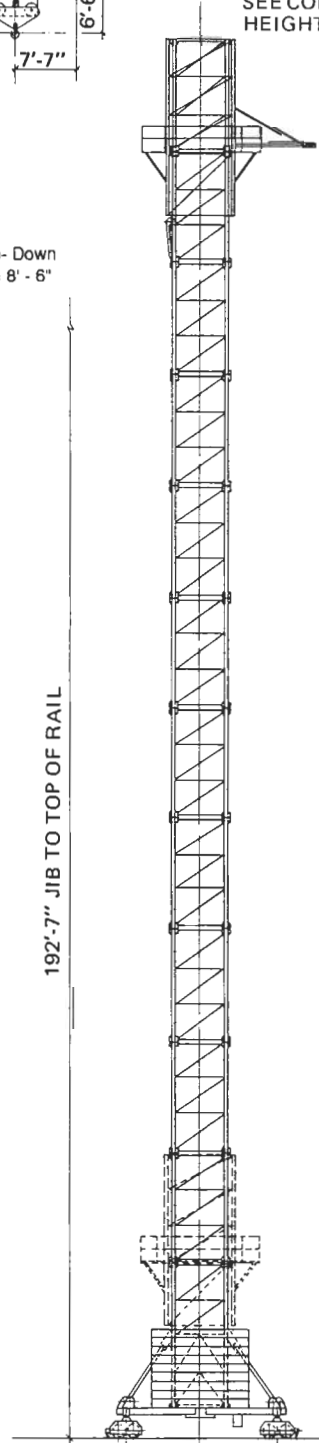
Plan View



SLAB OPENING

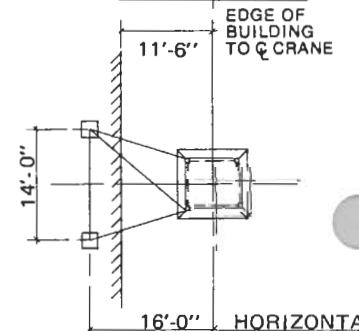
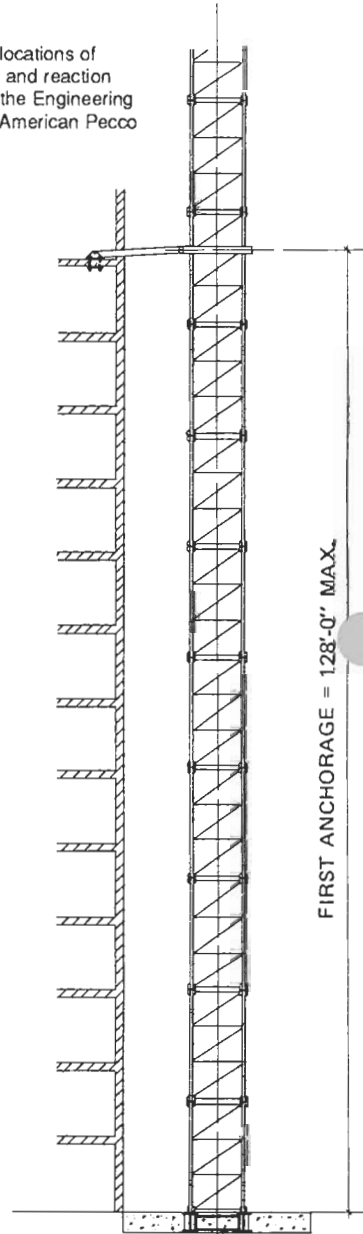


PLAN VIEW OF UNDERCARRIAGE



CONFIGURATION E

For exact locations of
Anchorages and reaction
forces consult the Engineering
Department of American Pecco



CONFIGURATION D