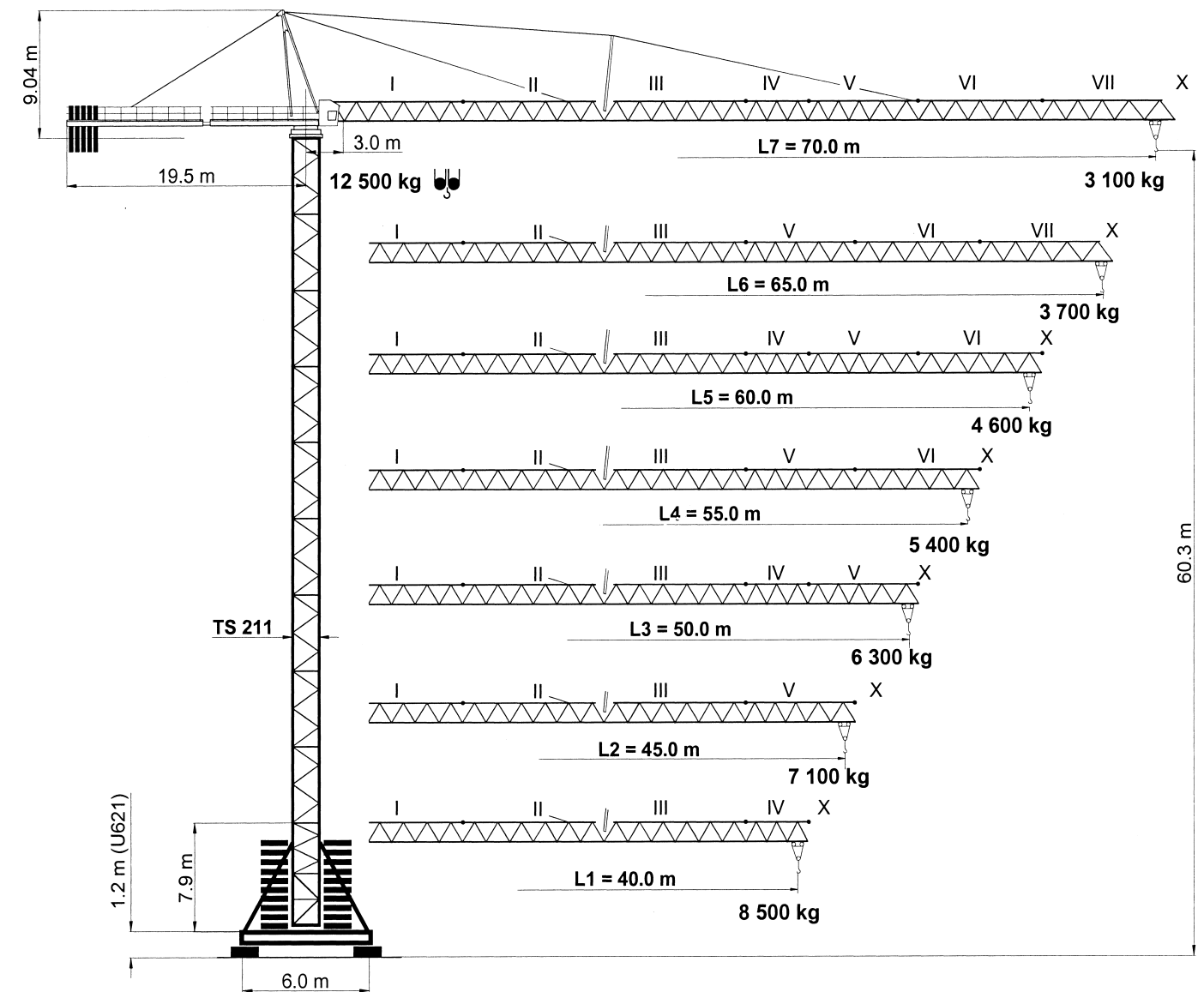


## Geschwindigkeiten • Speeds • Vitesses

FU 8-160/4		$v = 0 \rightarrow 80 \text{ m / min.}$	7.5 kW	400 V
SR 10-190/3		$v = 0 \rightarrow 25 \text{ m / min.}$	2 x 10.0 kW	50 Hz
K WB 120/4		$v = 0 \rightarrow 0.75 \text{ min}^{-1}$	2 x 120 Nm	3 Ph
<b>HK max. = 215 m 6 - Lagen / 6 - layers / 6 - couches</b>				
<b>Type</b> <b>FU 45-63/5</b> 45.0 kW	 <b>12.5 / 6.3 t</b>		<b>Motorenleistung ges.</b> Total motor output Puissance moteur (ohne/without/sans SR 10-190/3) ~ 70 kW	
	 80 kVA		<b>Anschlussleistung</b> Connected power Puissance installée 80 kVA	
<b>HK max. = 215 m 6 - Lagen / 6 - layers / 6 - couches</b>				
<b>Type</b> <b>SR WB 66-63/4F</b> 66.0 kW		$\rightarrow 112 \text{ m / min}$	2 500 kg	<b>Motorenleistung ges.</b> Total motor output Puissance moteur (ohne/without/sans SR 10-190/3) ~ 90 kW
		$\rightarrow 70 \text{ m / min}$	4 200 kg	
		$\rightarrow 45 \text{ m / min}$	6 300 kg	
		$\rightarrow 28 \text{ m / min}$	12 500 kg	
		$\rightarrow 28 \text{ m / min}$	12 500 kg	
		<b>Anschlussleistung</b> Connected power Puissance installée 140 kVA		



Unsere Vertretung:  
Our representative:  
Notre représentant:

**TEREX PEINER GmbH**

Gottbillstraße 1-7 · D-54294 Trier  
 Telefon: ++49 (6 51) 81 00 8 - 0  
 Telefax: ++49 (6 51) 8 93 00 u. 8 76 40  
 internet: <http://www.terex-peiner.de>  
 e-mail: [info@terex-peiner.de](mailto:info@terex-peiner.de)



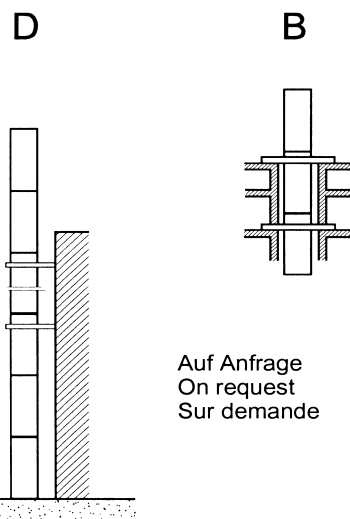
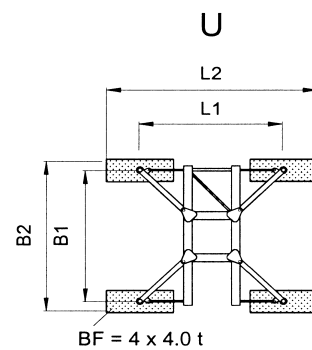
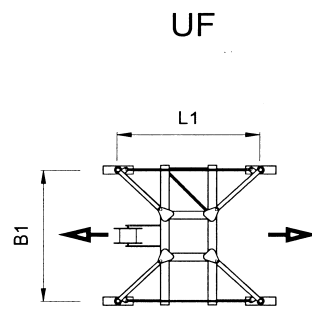
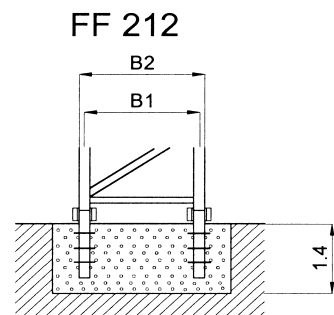
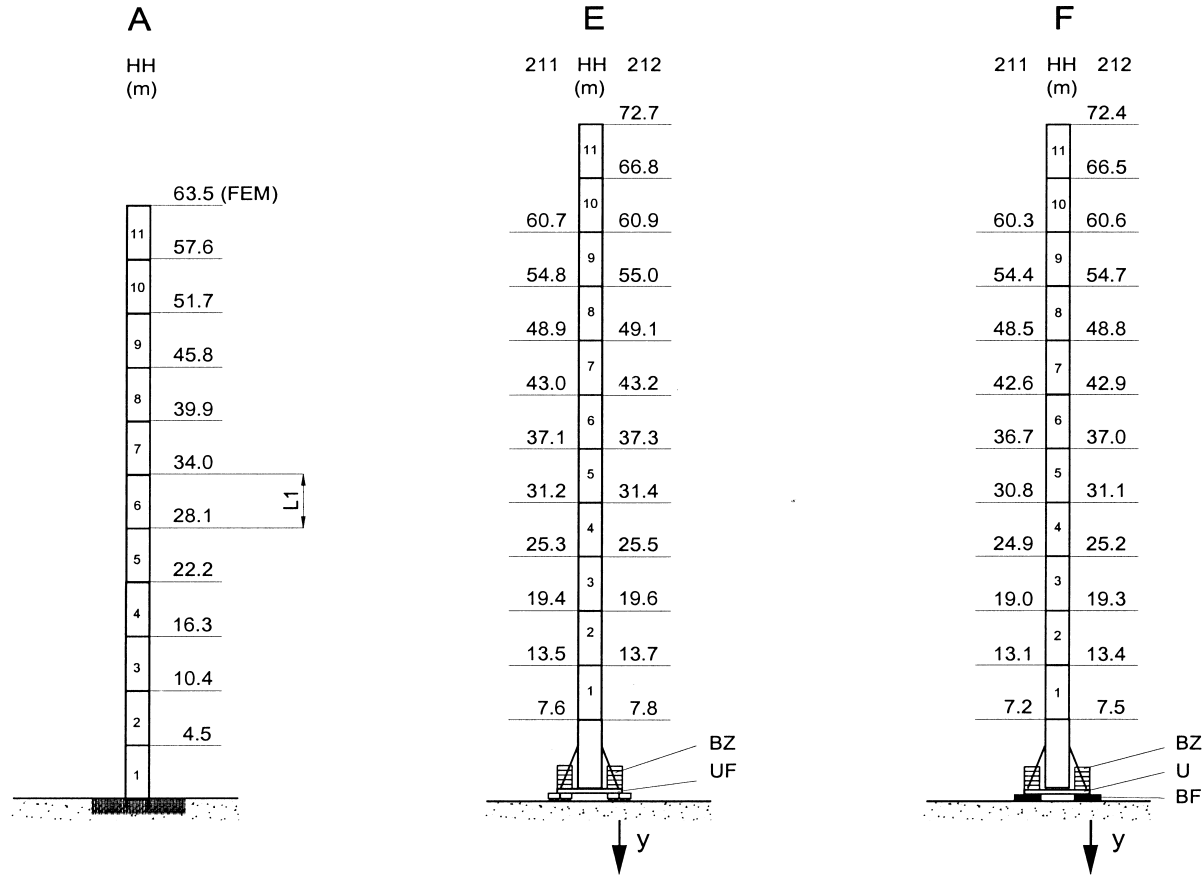
*simple, available and cost effective™*

DIN / FEM

Max. Tragfähigkeit  
Lifting capacity  
Force de levage

12.5 t

## Turmversionen • Tower versions • Versions de tours



Auf Anfrage  
On request  
Sur demande

	B1	B2	L1	L2	y / ●	y / ■
	m				kN	
U 621	6.0	7.0	6.0	8.8	1000	1127
U 821	8.0	8.0	8.0	10.8	916	1197
UF 621	6.0		6.0		1090	1260
UF 821	8.0		8.0		940	1240
TS 211.1	2.15	2.31	5.9			
TS 211.2	2.15	2.31	11.8			
TSV 211	2.15	2.31	7.9			
TS 212.2	2.15	2.37	5.9			
TSV 212	2.15	2.37	7.9			
TSK 212	2.15	2.37	2.0			

● in Betrieb / in operation / en service  
■ außer Betrieb / out of operation / sans service

## Ausladung und Tragfähigkeit • Radius and capacity • Portée et charge

Ausleger Jib Flèche	Max. Tragfähigkeit Max. Capacity Charge max.	Ausladung (m) und Tragfähigkeit (t) Radius (m) and capacity (t) Portée (m) et charge (t)																
		max. 12.5 / 6.3 t																
m	12.5 t	23	25	30	35	40	43	45	48	50	53	55	58	60	63	65	68	70
L7 70.0	3.0 - 20.5 m	10.91	9.95	8.21	6.96	6.19	5.68	5.38	4.98	4.74	4.41	4.22	3.95	3.78	3.55	3.41	3.22	3.10
L6 65.0	3.0 - 21.8 m	11.73	10.70	8.85	7.50	6.49	6.12	5.80	5.37	5.11	4.77	4.56	4.27	4.09	3.85	3.70		
L5 60.0	3.0 - 24.0 m	12.50	11.92	9.87	8.39	7.26	6.71	6.38	6.01	5.73	5.34	5.11	4.79	4.60				
L4 55.0	3.0 - 25.2 m	12.50	12.50	10.43	8.87	7.69	7.11	6.76	6.30	6.05	5.64	5.40						
L3 50.0	3.0 - 26.3 m	12.50	12.50	10.90	9.28	8.04	7.44	7.08	6.59	6.30								
L2 45.0	3.0 - 26.4 m	12.50	12.50	10.94	9.30	8.07	7.46	7.10										
L1 40.2	3.0 - 27.7 m	12.50	12.50	11.50	9.80	8.50												

## Ballastierung • Ballast • Lest

ohne Klettereinrichtung / without climbing device / sans cage télescopique

Version F – mit Zentralballast und Fundamentballast / with Central ballast block and Foundation block / avec Lest de base et Bloc de fondation – BZ + BF

HH	(m)	13.1	19.0	24.9	30.8	36.7	42.6	48.5	54.4	60.3		
U 621	(t)	76.0	76.0	76.0	76.0	76.0	86.0	96.0	116.0	136.0		
HH	(m)	13.4	19.3	25.2	31.1	37.0	42.9	48.8	54.7	60.6	66.5	72.4
U 821	(t)	36.0	36.0	36.0	36.0	36.0	36.0	46.0	56.0	76.0	86.0	106.0

Version E – mit Zentralballast / with Central ballast block / avec Lest de base – BZ

HH	(m)	13.5	19.4	25.3	31.2	37.1	43.0	48.9	54.8	60.7		
UF 621 - DIN	(t)	70.0	70.0	70.0	70.0	70.0	80.0	90.0	110.0	130.0		
UF 621 - FEM	(t)	70.0	70.0	70.0	70.0	80.0	80.0	90.0	110.0	130.0		
HH	(m)	13.7	19.6	25.5	31.4	37.3	43.2	49.1	55.0	60.9	66.8	72.7
UF 821 - DIN	(t)	20.0	20.0	20.0	20.0	20.0	30.0	40.0	50.0	70.0	80.0	100.0
UF 821 - FEM	(t)	30.0	30.0	30.0	30.0	30.0	30.0	40.0	50.0	70.0	80.0	100.0

## Gegengewichtsballast • Counterweight • Contrepoids

Ausleger / Jib / Flèche	L1	L2	L3	L4	L5	L6	L7
	13.60	14.60	16.60	17.75	19.75	18.75	20.75
BG	(t)	3 x 3.15	2 x 3.15		3 x 3.15	1 x 3.15	2 x 3.15
		1 x 4.15	2 x 4.15	4 x 4.15	2 x 4.15	4 x 4.15	3 x 4.15